



Auto-level

Avoids material sag during the heating cycle and maintains an even distance between heater and sheet whilst providing the user with an audible indication that the material is ready to form.



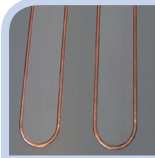
Bottom Heater Glass Protection

This is a special heat and impact resistant glass in the event that the sheet of plastic drops onto the lower heaters, the operator can scrape the glass clean and carry on with production, without any damage to the elements.



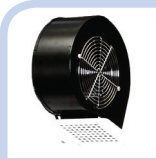
Ceramic Heaters

Ceramic heaters are well suited for high volume production when heaters are engaged for long periods and constant temperature must be maintained.



Cooling Bolster

A water cooled plate to directly cool and regulate aluminium tool temperature for consistent and faster cycle times.



Cooling Fan(s)

Cools formed material and shortens cycles times.



Cooling Pyrometer

Sensor to provide accurate sheet temperature feedback and initiate mould release upon reaching target temperature.



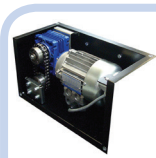
Digital Timer

Digital timer with programmable countdown and audible alarm helps achieve consistent cycle times.



Dry Rotary Vane Pump

Oil free with stainless steel valves provide great flexibility with reliable, low noise operation.



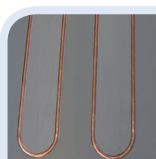
Electric Heater Drive

Electrically powered heater travel for convenient operation. Controlled speed and braking prevents damage to elements.



Formech Cycle View

'FCV' is an intuitive, graphically driven interface providing at a glance machine cycle status. Operators can adjust each control element in real-time without interrupting the current cycle.



Heating Bolster

An oil or water heated plate to directly heat and regulate aluminium tool temperature for consistent and faster cycle times.



Heating Pyrometer

The heating pyrometer triggers the heater return automatically when the correct temperature is reached



Heavy Duty Clamping System

This is usually pneumatically powered, pre-drilled for multiple position reducing windows.



Independently Controllable Heating Zones

Depends on the machine specification, the elements are split into zones for fine control



Multi-level Operator Access

The supervisor of the machine can choose and determine a level of access for the different operators.



Negative Gate for Female Formings

This enables a negative vacuum forming that is reel fed to be pull through the machine without obstruction.



Pneumatic Heater Drive

Heavy duty pneumatically powered heater travel provides precise and rapid heater deployment, whilst braking prevents element damage.



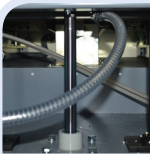
Pneumatic Trigger Clamps

Pneumatically powered clamping system that provides powerful and effortless control.



Pneumatically Powered Clamping Frame

Pneumatically powered clamping system that provides powerful and effortless control.



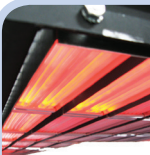
Power Table

Lifts tool table quickly and precisely making effortless operation, even with heavy tools. Twin controls avoid accidental activation.



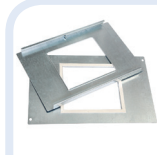
Pre-stretch

Pre-stretch enables the user to pump air into the heated sheet, creating a bubble to avoid thinning of material with deeper tools.



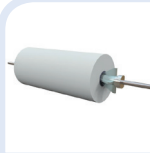
Quartz Heater with Variable Standby

Quartz heaters have the benefit of a rapid response and high efficiency resulting in time and energy savings.



Reducing Windows

Reduces forming area to utilise smaller sheets of material and minimise wastage. Standard or custom size.



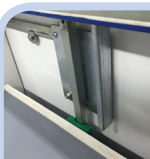
Reel Feed

Assembly to hold reel materials.



Remote Access

This allows the operator to gain access to the machine operating system remotely and to download programs.



Safety Interlock

Mechanical interlock prevents table being raised whilst heaters are in forward position (all desktop machines).



Safety Light Curtain

Protects users from accidental injury by halting all mechanical actions when light curtain is broken.



Servo Plug Assist

Instead of using pneumatics a servo plug assist provides variable positioning and damping of the plug descent for precise control.



Spare Parts Kit

A consumable parts kit typically including seals, elements, filter, fuses, toggle clamps.



Spray Mist

Spray mist is combined with cooling fan systems (when fitted) to shorten cooling time.

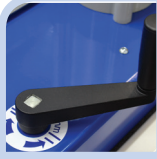


Table Height Adjust

Table height adjust shortens the tool table travel when using shallow tools and reduces cycle time.



Trolley

A dedicated white trolley with locking wheels and convenient storage for plastics sheet.



Vacuum Flow Regulator

Precisely regulates vacuum flow rate when a greater level of control is required with demanding applications.



Vacuum Gauge

A visual indication of consistent vacuum pressure being applied (pressure in Hg / bar).



Vacuum Receiver Tank

A vacuum reservoir to accommodate instant high flow rate demands to shorten cycle times (includes related PLC and user interface upgrade when fitted to 1372).