

ASIGA®
www.asiga.com



ASIGA®

**3D Printers for
Digital Dental Production**
Repeatable precision for quality assurance and patient safety.



Being the creators of the precision desktop 3D printer market, we continue to offer precision, surface finish and product innovations designed to outperform any other.





"Asiga's high quality and reliability make it a great option for the lab."
Christopher Kirkland, R&D Technical Analyst, Glidewell Laboratories



"After extensive internal testing of a variety of 3D printing systems, the ASIGA MAX UV is clearly one of the best desktop 3D printers in terms of print quality and consistency for the tested dental indications."
Alex Pilet, Head of Advanced Technologies, Nobel Biocare



"We use the Asiga MAX UV as if offers a completely open material system that allows us to utilise resins from almost any vendor."
Brad Race, Owner, Race Dental



"The MAX UV gave us the highest and most reliable quality in 3D printing we have seen with outstanding tech support and at a cost that we could compete with any competitor."
Grant Davis, CEO, Davis Advanced Dental Prosthetics



"Asiga 3D printers have proven to produce very high quality models and their DLP technology allows the use of many compatible third party materials including Detax, Dreve, Pro3dure and Whip Mix."
David Rodwell, Owner, Rodwell Orthodontic Laboratory

OUR KEY FEATURES
What makes us different



Our key features.
The innovations that make us different.


Wifi Enabled
connect wirelessly

Single Point Calibration
calibrate in under 30 seconds

High Impact Hood
UV blocking with excellent clarity

Auto Power-Off
energy saving mode

Fast Material Change-over
Less than 30 seconds

Open Material System
use any suitable 3rd party material

Composer Software
intuitive user interface included

Environmental Control
reliable performance with every print

SPS Technology
active layer control for consistent output

Lifetime Technical Support
free and unlimited

Touch Screen Display
for greater user convenience

High Power UV LED 385nm
for long term reliability and accuracy

Internal Radiometer
automatic LED power calibration

Statistics	
# Points:	195400
Min:	-1.3662
Max:	1.994
Mean value:	-0.0024
Variance:	0.001
Std deviation:	0.0317
RMS:	0.0318
In tolerance(%):	93.0655
Out tolerance(%):	6.9345

Color scale

Options



www.asiga.com

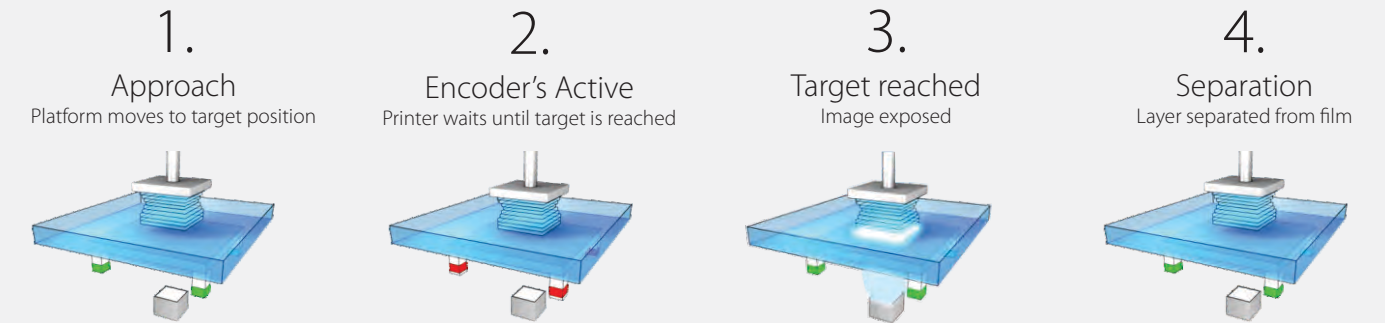
3shape

Our **Smart Positioning System (SPS)** technology ensures that every layer is formed accurately resulting in a reliable output for quality assurance and patient safety.

3D scans of full-arch dental models printed in DentaMODEL demonstrate over 93% of data points are within 50 microns of the original CAD file with a standard deviation of 31 microns.
Printed on MAX UV, scanned using 3Shape scanner and validated in 3Shape Convince software

Our Smart Positioning System (SPS) Technology.

All MAX systems incorporate Asiga's proven SPS Technology sensor array that guarantees every model layer is formed precisely in minimal time.



The result is precision, speed and reliability that your lab or clinic can depend on.

MAX Mini UV

Accurate, reliable, affordable.

MAXMini UV delivers Asiga's latest SPS technology in an economical format ideal for the production of crown & bridge casting patterns.

Capable of printing small items including crowns, copings and veneers. The MAXMini can also be used as a dedicated printer for producing smaller volume items such as gingiva components.



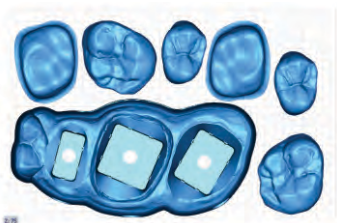
Printer Performance

Print capacity	up to 12 Crowns (size dependant)
Print speed - 50µm layers	1 hr
Print cost (USD)	\$0.50 - \$2 per piece (weight/material dependant)

Printer Specification

Build size X,Y,Z	51.2 x 32 x 76mm* (2 x 1.26 x 3 inches)
Pixel size X,Y	39µm
Z resolution	Variable in 1µm increments
Light source	High-power UV 385nm LED
Material system	Open material system
File inputs	STL, SLC, STM
Software	Asiga Composer (included)
Network compatibility	Wifi, Wireless direct, Ethernet
Industry sectors	Dental Laboratory, Dental Clinic
System size	260 x 380 x 370mm (10.2 x 15 x 14.5 inches)
System weight	16.5Kg (packaged 19Kg)
Packaged size/weight	410 x 500 x 480mm (18.1 x 22 x 19.7 inches)
Power	12VDC 10A

* build envelope size may vary



MAX UV

Minimum footprint, maximum productivity.

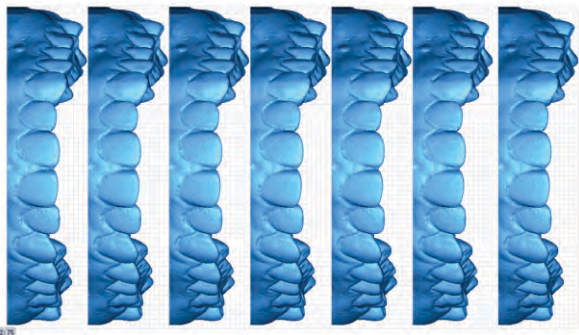
The Asiga MAX™ is the world's most advanced digital dental 3D printer offering exceptional productivity in a small footprint. With 62µm HD print precision, the Asiga MAX™ is optimized for orthodontics, crown & bridge, surgical guides, dental models, custom trays, and partial dentures in lab and clinical environments.

All Asiga printers are open to materials from any supplier for maximum flexibility and economy.



Printer Performance

Print capacity	7-8 dental models (size dependant)
Print speed - 100µm layers	1.5 - 2 hrs
Print cost (USD)	\$1.85 - \$4 per piece (weight/material dependant)



Printer Specification

Build size X,Y,Z	119 x 67 x 76mm* (4.68 x 2.63 x 3 inches)
Pixel size X,Y	62µm
Z resolution	Variable in 1µm increments
Light source	High-power UV 385nm LED
Material system	Open material system
File inputs	STL, SLC, STM
Software	Asiga Composer (included)
Network compatibility	Wifi, Wireless direct, Ethernet
Industry sectors	Dental Laboratory, Dental Clinic
System size	260 x 380 x 370mm (10.2 x 15 x 14.5 inches)
System weight	16.5Kg (packaged 19Kg)
Packaged size/weight	410 x 500 x 480mm (18.1 x 22 x 19.7 inches)
Power	12VDC 10A

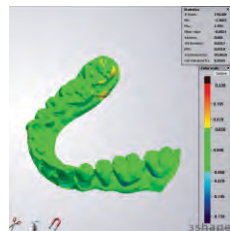
* build envelope size may vary



DentaMODEL

High precision dental model material.

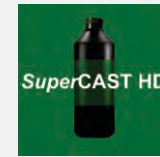
3D scans of full-arch dental models printed in DentaMODEL demonstrate over 93% of data points are within 50 microns of the original CAD file with a standard deviation of 31 microns.



PlasGRAY

Orthodontic model material.

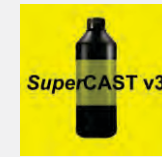
For the production of vacuum form aligners, mouth guards and other appliances.



SuperCAST HD

Direct casting resin for C&B and partial frameworks.

Direct casting material for partial frameworks and crown and bridge restorations.



SuperCAST v3

Precision direct investment casting resin.

SuperCAST v3 is Asiga's highest definition direct-casting material for the production of accurate crown and bridge, partial frameworks and inlays/onlays.



Open material system offering flexibility and the widest material choice of any system on the market. Asiga printers are compatible with the following material manufacturers.



DETAX

pro**3d**ure
medical

SCHEU

dentona[®]
NEW WAY DENTAL TECHNOLOGY

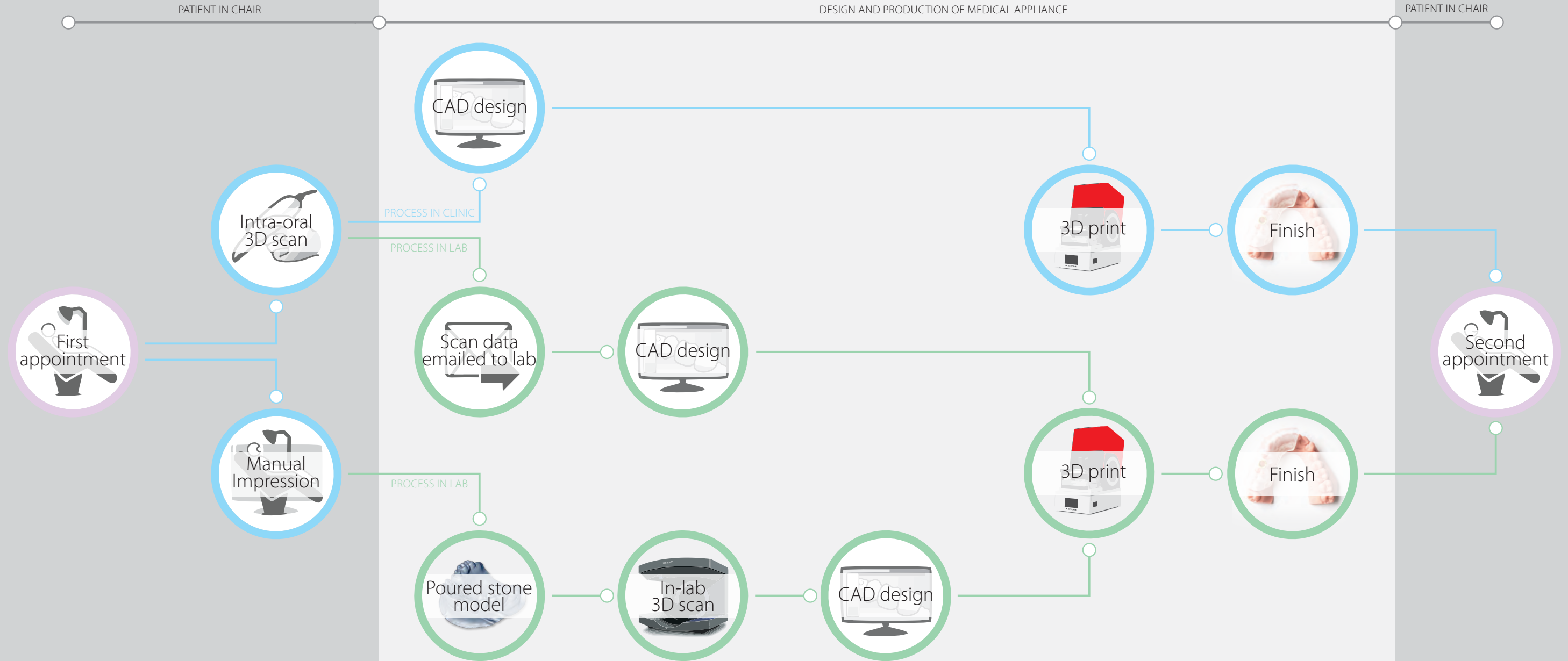


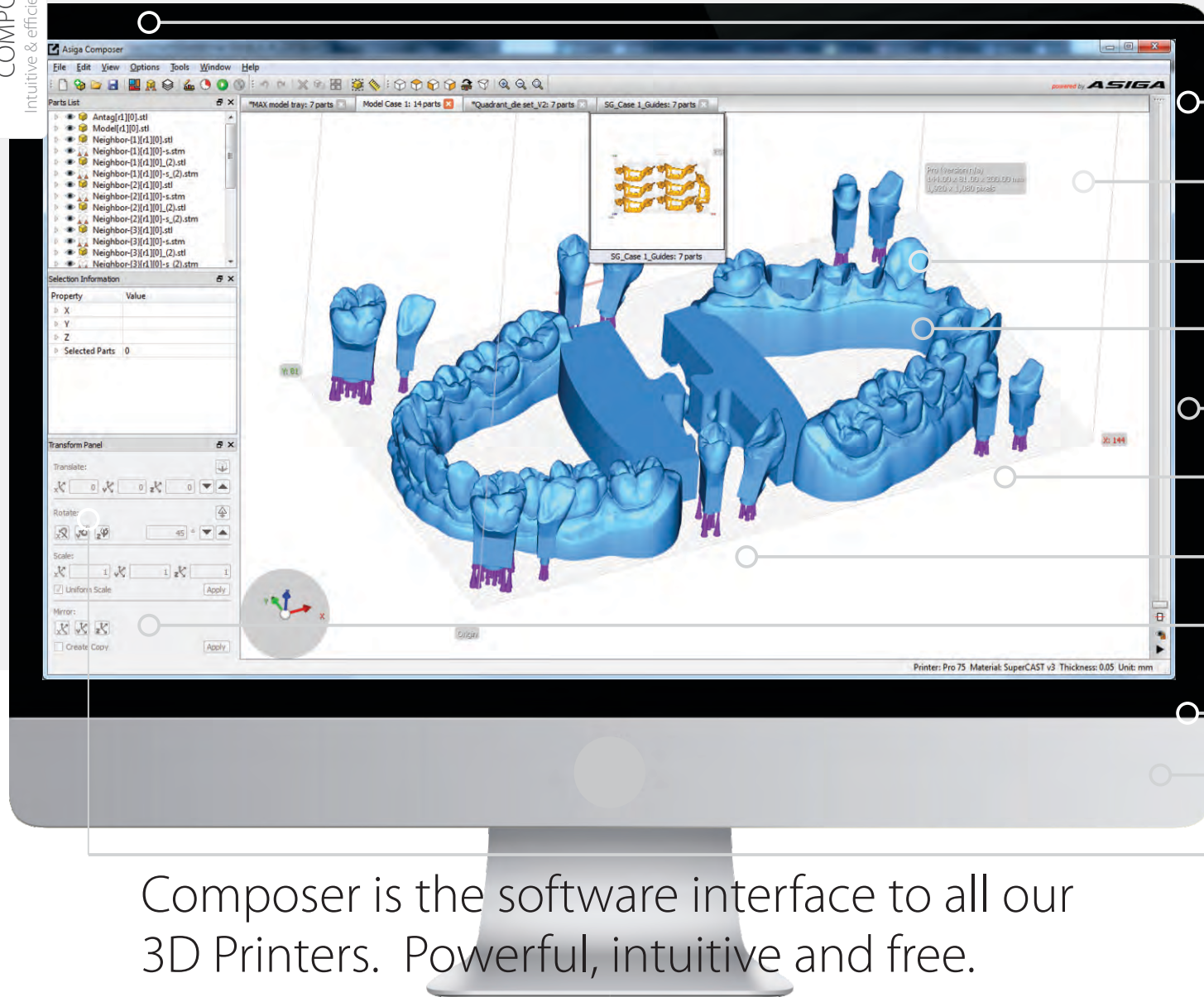
NextDent
by Vertex Dental

keystone[®]
Industries

GC

A simple, effective and streamlined digital workflow.





Auto-Supports
for greater user efficiency

Remote Control
login to your 3D printer remotely

Build Time Estimator
schedule workflow

STL / SLC or Both
load STL & SLC into the same build

Flexible Supports
avoid support collisions

Multi-Stacking
maximize Z height usage

Dynamic Array
maximize build area usage

Add Casting Sprue
streamline casting workflow

Load Multiple Builds
onboard PC to store multiple builds

Final Check
measurement tool

License Free
free software updates forever

User Control
full user access to build settings

Composer is the software interface to all our
3D Printers. Powerful, intuitive and free.

Multi-Operating System
Apple, Windows & Linux



Full compatibility with leading 3D scanning and digital design software providers.



ASIGA

Free and unlimited lifetime technical support.
Local sales, service and support via our global
reseller network.

Affordable Digital Manufacturing, it's something Asiga invented.

In 2011, Asiga launched the world's first LED based DLP 3D printer and started the affordable desktop stereolithography revolution which changed digital manufacturing forever.

Asiga won the MJSA's 2012 Thinking Ahead award for best new technology and gained international recognition for innovative products which continue to lead their respective categories to this day.

Asiga designs and manufactures all products at it's headquarters in Sydney, Australia. Asiga's in-house mechanical, electrical, software and materials team ensures continued innovation and product improvement.

Contact us or one of our resellers to learn more.

Asiga Australia (HQ)
Factory 2, 19-21 Bourke Road
Alexandria, Sydney 2015
Australia
TEL: +61 2 9690 2737

Asiga Germany
Kraempferstr. 4
99084, Erfurt
Germany
TEL: +49 361 5506 6866

Asiga USA

TOLL FREE: +1 877 689 99 98

info@asiga.com
www.asiga.com



YOUR PUTTING ON
EFFECTIVE EQUIPMENT

- 1
- 2
- 3
- 4
- 5

Cough etiquette

Cover your cough

- 1
- 2
- 3
- 4
- 5
- 6